



**SUSSEX
HERITAGE
TRUST**
AWARDS 2026



**WINNERS
& HIGHLY
COMMENDED**



PROUD TO SUPPORT
SUSSEX HERITAGE TRUST



THAKEHAM



**SUSSEX
HERITAGE
TRUST
AWARDS 2026**

Congratulations to all the winning and highly commended projects for the 2026 Sussex Heritage Trust Awards sponsored by Thakeham.

In this, the 28th anniversary year of the Sussex Heritage Trust Awards, we are delighted to celebrate the very best of high quality conservation, restoration and the good design of newly built projects, whilst also encouraging the use of traditional skills and crafts.

Please enjoy this short brochure celebrating all the Award-winning and Highly Commended projects and the 2026 Sussex Heritage Trust Person of the Year. Thank you to everyone who entered the 2026 Awards.

If you would like to support the **Sussex Heritage Trust** and our Awards in 2027, please get in touch.

HEADLINE SPONSOR



THAKEHAM

PLAQUE SPONSOR



NFU Mutual
CHICHESTER, HORSHAM AND PULBOROUGH

CONTACT

Sussex Heritage Trust

t: **01243 576 524** / e: **office@sussexheritagetrust.org.uk**

sussexheritagetrust.org.uk

✕ **@sussexheritage** 📷 **@sussexheritagetrust**

in sussex-heritage-trust-limited 🎵 **@sussex.heritage.trust**

Design and Print by: **fuzzmedia.**

SPONSORS

Thank you to our sponsors, without whom the Awards and indeed the Trust itself could not exist.



THAKEHAM



NFU Mutual
CHICHESTER, HORSHAM AND PULBOROUGH

G GRAVETYE
Manor



Launch Sponsors



Luncheon and Wine Sponsors



Thank you to our partners:



Others who wish to remain anonymous.



The **Sussex Heritage Trust Awards** are designed to recognise and reward high quality conservation, restoration and good design of newly built projects and encourage the use of traditional skills and crafts.

CATEGORIES

These Awards are presented to projects:

- **Public & Community**
A project which provides or improves facilities for the community.
Sponsored by **DBR Limited** and **Landbuild**
- **Commercial**
A non-residential project (eg. shops, offices and industrial).
Sponsored by **Savills**
- **Large Scale Residential**
A project of more than ten units.
Sponsored by **Covers Timber & Builders Merchants** and **RHP**
- **Mid-Scale Residential**
A project of two to ten units.
Sponsored by **Vander Homes**
- **Small Scale Residential: New Build**
A new-build of one unit, which enhances and preserves its environment.
Sponsored by **Irwin Mitchell**

- **Small Scale Residential: Restoration, Conversion and Extension**

A restoration and/or conversion of one unit. This can include a new building extension/improvements on a listed property, where restoration has taken place.

Sponsored by **City & Country** and **RH & RW Clutton**

- **Landscape & Gardens**

A reclamation or improvement scheme in an urban or rural environment.

Sponsored by **Gravetye**

- **Ecclesiastical Building**

A restoration, repair, conversion or development scheme, which improves all, or part of an existing or former ecclesiastical building.

Sponsored by **Valley Builders**

For a full description of the guidelines and criteria visit sussexheritagetrust.org.uk

Individual Awards

- **Building Crafts**
An example of high-quality work by a craftsperson or young apprentice using traditional skills or crafts.
Sponsored by **Pilbeam Construction** and **Sussex Asphalte Ltd**
- **Sussex Heritage Trust Person of the Year Award**
The recognition of one person's outstanding commitment to the heritage of Sussex.
Sponsored by **Harvey's Brewery** and **Lawson Commercial**
- **Young Apprentice of the Year**
Sponsored by **Thakeham**

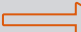
Special Awards

- **The Eco Award**
The recognition of a project's commitment to excellence in sustainability, biodiversity and energy efficiency.
Sponsored by **Cowan Architects** and **Kreston Reeves**
- **The South Downs Award**
Promoting outstanding design in a nationally-designated landscape, which clearly demonstrates a positive contribution to the National Park.
Sponsored by **South Downs National Park Authority**



Sussex Heritage Trust Awards 2027

Shape the future by celebrating the past—
sponsor the 2027 Awards!

To find out more on how you
can support the Awards,
please scan this code: 



We'd love to hear from you.



**BECOME A FRIEND OF THE
SUSSEX HERITAGE TRUST
AND BE AT THE HEART OF
EVERYTHING WE DO.**

**WITH THEIR DONATIONS,
FRIENDS PLAY A VITAL
PART IN ENABLING US TO
CONTINUE OUR WORK.**

SCAN QR
CODE BELOW



With thanks to our Corporate Friends:

Aldershaw Handmade Tiles Ltd, Baqus Construction & Property Consultancy, Barlavington Estate, Brighton and Hove Heritage Commission, Cowan Architects, Firle Management Ltd, Focus SB, G A MacDonald Master Thatcher, Glynde Estates, J.H. Payne & Sons Ltd, M. Marchant Specialists Lead Roofing Contractors, Saada & Sons, St. Swithun's Restoration Trust, Sussex Asphalte, The Leconfield Estates, The Martin Sewell Building Company Ltd



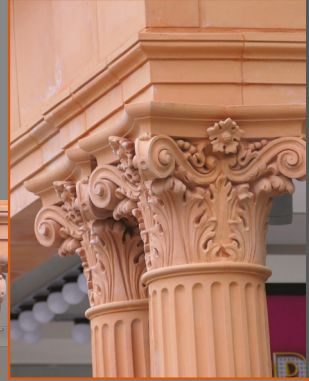
COMMERCIAL AWARD

WINNERS

SPONSORED BY SAVILLS

**COLONNADE RESTORATION
BRIGHTON**

Submitted by:
Paye Stonework and Restoration



CLOSE UP

COMMERCIAL AWARD
WINNERS

SPONSORED BY SAVILLS



**ROYAL PAVILION
BRIGHTON**

Submitted by:
Paye Stonework and Restoration





COMMERCIAL AWARD

HIGHLY COMMENDED

SPONSORED BY SAVILLS

BALCOMBE PIT BARNs
GLYNDE

Submitted by:
MJB Architecture



INTERIOR



ECCLESIASTICAL BUILDING AWARD

WINNERS

SPONSORED BY VALLEY BUILDERS



**BNJC, THE SHUL
HOVE**

Submitted by:
Morgan Carn Architects



GARDEN





ECCLESIASTICAL BUILDING AWARD

WINNERS

SPONSORED BY VALLEY BUILDERS

**THE PARISH CHURCH OF ROTTINGDEAN
BRIGHTON**

Submitted by:
Parker & Son Construction



WINDOW

ECCLESIASTICAL BUILDING AWARD

HIGHLY COMMENDED

SPONSORED BY VALLEY BUILDERS



**HOLY TRINITY CHURCH
EASTBOURNE**

Submitted by:
Richard Soan Roofing Services



WINDOW

**ST. LEONARD'S CHURCH
SOUTH STOKE**

Submitted by: Lion Roofing



WINDOW



LANDSCAPE & GARDENS AWARD

WINNERS

SPONSORED BY GRAVETYE

**HALNAKER HILL FARM
CHICHESTER**

Submitted by:
Halnaker Hill Natural Capital/SDNP



VIEW



LARGE SCALE RESIDENTIAL AWARD

WINNERS



SPONSORED BY COVERS TIMBER & BUILDERS MERCHANTS | CITY & COUNTRY

**TEMPEST COURT
WORTHING**

Submitted by:
ECE Architecture



CLOSE UP





LARGE SCALE RESIDENTIAL AWARD

HIGHLY COMMENDED

SPONSORED BY COVERS TIMBER & BUILDERS MERCHANTS | CITY & COUNTRY

ARUNDEL GATE

ARUNDEL

Submitted by:
Esquire Developments



OVERVIEW



MID-SCALE RESIDENTIAL AWARD

WINNER

SPONSORED BY VANDER HOMES



**THE NOOK
PETWORTH**

Submitted by:
Craig Construction Services Ltd



EXTERIOR





PUBLIC AND COMMUNITY AWARD

WINNERS

SPONSORED BY DBR LIMITED | LANDBUILD

**GARDENS GATEHOUSE,
WEST DEAN GARDENS
CHICHESTER**

Submitted by:
Vallis & Hall Conservation Architects



EXTERIOR



PUBLIC AND COMMUNITY AWARD

WINNERS

SPONSORED BY DBR LIMITED | LANDBUILD



**HERSTMONCEUX
CASTLE ESTATE
HAILSHAM**

Submitted by:
Valley Builders Ltd



CLOSE UP





PUBLIC AND COMMUNITY AWARD

WINNERS

SPONSORED BY DBR LIMITED | LANDBUILD

**THE BRADBURY DEN
NORTH CHAILEY**

Submitted by:
Chailey Heritage Foundation



BEFORE



PUBLIC AND COMMUNITY AWARD

HIGHLY COMMENDED

SPONSORED BY DBR LIMITED | LANDBUILD



HEATHFIELD YOUTH HUB HEATHFIELD

Submitted by:
LRA Retinue Ltd



ARIEL VIEW





PUBLIC AND COMMUNITY AWARD

HIGHLY COMMENDED

SPONSORED BY DBR LIMITED | LANDBUILD

THE COLONNADE
BEXHILL-ON-SEA

Submitted by:
DBR Southern



CLOSE UP



PUBLIC AND COMMUNITY AWARD

HIGHLY COMMENDED

SPONSORED BY DBR LIMITED | LANDBUILD



THE TREVOR ARMS PUB LEWES

Submitted by:
Glynde Estates



INTERNAL





SMALL SCALE RESIDENTIAL AWARD: NEW BUILD

WINNERS

SPONSORED BY IRWIN MITCHELL

**BULLS BARN
DITCHLING**

Submitted by:
Selencky Parsons



SMALL SCALE RESIDENTIAL AWARD: NEW BUILD

WINNERS

SPONSORED BY IRWIN MITCHELL



CLAY RISE
WEST HOATHLY

Submitted by:
Templeton Ford





SMALL SCALE RESIDENTIAL AWARD: NEW BUILD

WINNERS

SPONSORED BY IRWIN MITCHELL

SPINNEY COTTAGE ITCHENOR

Submitted by:
Randell Design Group



ARIEL VIEW



SMALL SCALE RESIDENTIAL AWARD: NEW BUILD

HIGHLY COMMENDED

SPONSORED BY IRWIN MITCHELL



FRAGMENTS IN TIME PIDDINGHOE

Submitted by:
LRA Retinue Ltd



CLOSE UP

HERON HOUSE CHICHESTER

Submitted by: Open Design Studio



INTERNAL



SMALL SCALE RESIDENTIAL AWARD: NEW BUILD

HIGHLY COMMENDED

SPONSORED BY IRWIN MITCHELL



ORCHARD HOUSE BIRDHAM

Submitted by:
Randell Design Group



LANDSCAPE

QNIM HEATHFIELD

Submitted by:
MJB Architecture



SMALL SCALE RESIDENTIAL: RESTORATION,
CONVERSION AND EXTENSION

WINNERS



SPONSORED BY CITY & COUNTRY | RH & RW CLUTTON

BOW END BARN
BILLINGHURST

Submitted by:
Tracey Poulton Pear Tree Farm



INTERNAL



SMALL SCALE RESIDENTIAL: RESTORATION,
CONVERSION AND EXTENSION

WINNERS

SPONSORED BY CITY & COUNTRY | RH & RW CLUTTON

CLAY HOUSE BALCOMBE

Submitted by:
Silke Stevens Design



INTERIOR



SMALL SCALE RESIDENTIAL: RESTORATION,
CONVERSION AND EXTENSION

WINNERS



SPONSORED BY CITY & COUNTRY | RH & RW CLUTTON

**NORTH PALLANT
COURTYARD HOUSE
CHICHESTER**

Submitted by:
Adriana Cepeda Bejarano



INTERIOR





SMALL SCALE RESIDENTIAL: RESTORATION,
CONVERSION AND EXTENSION

WINNERS

SPONSORED BY CITY & COUNTRY | RH & RW CLUTTON

OLD BAKERY LINDFIELD

Submitted by:
Stephen Yeomans



EXTERIOR



SMALL SCALE RESIDENTIAL: RESTORATION,
CONVERSION AND EXTENSION

WINNERS



SPONSORED BY CITY & COUNTRY | RH & RW CLUTTON

**REFURBISHMENT OF
COMPS COTTAGE
LEWES**

Submitted by: Glynde Estates



FRONT





SMALL SCALE RESIDENTIAL: RESTORATION,
CONVERSION AND EXTENSION

WINNERS

SPONSORED BY CITY & COUNTRY | RH & RW CLUTTON

REIMAGINING RYMANS CHICHESTER

Submitted by:
Richard Meynell Ltd



BEFORE



SMALL SCALE RESIDENTIAL: RESTORATION,
CONVERSION AND EXTENSION

WINNERS



SPONSORED BY CITY & COUNTRY | RH & RW CLUTTON

**SCOTLAND FARM
MIDHURST**

Submitted by:
Nicholls Countryside Construction Ltd



INTERIOR





SMALL SCALE RESIDENTIAL: RESTORATION,
CONVERSION AND EXTENSION

HIGHLY COMMENDED

SPONSORED BY KINGSLEY ROOFING | RH & RW CLUTTON

GABLE END COTTAGE

MAYFIELD

Submitted by: The Oak Blokes Ltd



INTERIOR

HARTING DOWN

MIDHURST

Submitted by: AIM Heritage & Development



INTERIOR

SMALL SCALE RESIDENTIAL: RESTORATION,
CONVERSION AND EXTENSION

HIGHLY COMMENDED

SPONSORED BY KINGSLEY ROOFING | RH & RW CLUTTON



PICKERIDGE FARM ARDINGLY

Submitted by: Dow Jones Architects



INTERIOR

WRETHAM HOUSE FOREST ROW

Submitted by: Nicolas Pople Architects Ltd



KITCHEN



BUILDING CRAFTS AWARD

WINNERS

SPONSORED BY PILBEAM CONSTRUCTION | SUSSEX ASPHALTE LTD

**JOHN CLIFFORD FOR WORK TO
COCOON EXTERIOR WORKS
FITTLEWORTH**

Submitted by:
Cocoon Exterior Works



CLOSE UP



BUILDING CRAFTS AWARD

WINNERS



SPONSORED BY PILBEAM CONSTRUCTION | SUSSEX ASPHALTE LTD

**JOE COBDEN FOR WORK TO
COASTAL HOME
CHICHESTER**

Submitted by:
West Sussex Carpentry and Building



EXTERIOR





BUILDING CRAFTS AWARD

WINNERS

SPONSORED BY PILBEAM CONSTRUCTION | SUSSEX ASPHALTE LTD

**TOM CROFT FOR WORK TO
REGNUM PLACE
CHICHESTER**

Submitted by:
Pinnacle Works Ltd



STAIRWAY



BUILDING CRAFTS AWARD

WINNERS



SPONSORED BY PILBEAM CONSTRUCTION | SUSSEX ASPHALTE LTD

**MATHEW HILL FOR WORK TO
BOW END BARN
BILLINGHURST**

Submitted by:
Tracey Poulton Pear Tree Farm



INTERIOR





BUILDING CRAFTS AWARD

WINNERS

SPONSORED BY PILBEAM CONSTRUCTION | SUSSEX ASPHALTE LTD

**DARREN MILLS FOR WORK TO
HERSTMONCEUX CASTLE
HAILSHAM**

Submitted by:
Valley Builders Ltd



DETAIL



BUILDING CRAFTS AWARD

WINNERS

SPONSORED BY PILBEAM CONSTRUCTION | SUSSEX ASPHALTE LTD



**LIAM O'NEIL FOR WORK TO
PECKHAMS LION ROOFING
ARUNDEL**

Submitted by:
Lion Roofing



CLOSE UP



BUILDING CRAFTS AWARD

WINNERS

SPONSORED BY PILBEAM CONSTRUCTION | SUSSEX ASPHALTE LTD

**JOHN ZIELINSKI FOR WORK TO
HERSTMONCEUX CASTLE
HAILSHAM**

Submitted by:
Valley Builders Ltd



OVERVIEW



BUILDING CRAFTS AWARD

HIGHLY COMMENDED

SPONSORED BY PILBEAM CONSTRUCTION | SUSSEX ASPHALTE LTD



JARROD BERRY FOR WORK TO HARTING DOWN MIDHURST

Submitted by: AIM Heritage and Development



FRONT

HARRY GODMAN FOR WORK TO WOODCOTE FARM HOUSE GRAFFHAM

Submitted by: Pauline Sutton Design



REAR VIEW



THE ECO AWARD 

WINNER

SPONSORED BY COWAN ARCHITECTS | KRESTON REEVES

**THE BRADBURY DEN
NORTH CHAILEY**

Submitted by:
Chailey Heritage Foundation



BEFORE





THE ECO AWARD

HIGHLY COMMENDED

SPONSORED BY COWAN ARCHITECTS | KRESTON REEVES



BULLS BARN DITCHLING

Submitted by:
Selencky Parsons



BEFORE





THE ECO AWARD 

HIGHLY COMMENDED

SPONSORED BY COWAN ARCHITECTS | KRESTON REEVES

CLAY RISE WEST HOATHLY

Submitted by:
Templeton Ford



BEFORE





THE ECO AWARD

HIGHLY COMMENDED

SPONSORED BY COWAN ARCHITECTS | KRESTON REEVES



VICTORIA ROAD WORTHING

Submitted by:
ECE Architecture



BEFORE





THE SOUTH DOWNS AWARD

WINNER

SPONSORED BY SOUTH DOWNS NATIONAL PARK AUTHORITY

SCOTLAND FARM MIDHURST

Submitted by:
Nicholls Countryside Construction Ltd

This project demonstrates the immense value of traditional trades and local building materials. The new extension and farmstead buildings blend naturally into the Downs, showcasing the way in which natural materials, such as flint, brick, and clay tiles, acquire a patina of age which works in harmony with the varied, intricate properties of nature. Subtle changes to the window placement and porch, and appropriately sized extensions highlight the importance of good proportions, whilst a ground source heat pump allows for exceptionally efficient heating and cooling with minimal carbon emissions.



BEFORE







THE SOUTH DOWNS AWARD

HIGHLY COMMENDED

SPONSORED BY SOUTH DOWNS NATIONAL PARK AUTHORITY

BULLS BARN DITCHLING

Submitted by:
Selencky Parsons

This crisp, contemporary, energy-efficient building uses three enduring materials: flint block, glass and tiles. It shows how historic local forms and materials, interpreted for modern layouts, can sit beautifully in the landscape, with its mass broken into three connected gables. Rainwater harvesting, SuDS and thoughtful landscaping, including chalk grassland restoration and trees, strengthen its exemplary sustainability credentials.





BEFORE



SUSSEX HERITAGE TRUST

PERSON OF THE YEAR 2026

SPONSORED BY HARVEY'S BREWERY | LAWSON COMMERCIAL

SIMON WATKIN

Nominated by: Glynde Estate

Simon Watkin's career is a remarkable example of dedication to traditional craft, self-taught expertise and a lifetime commitment to quality workmanship. Now aged 70, Simon's journey into the building trades was far from conventional. After completing a three-year Fine Arts degree, he moved to the South East in his early twenties and initially made a living running an art studio in Brighton, selling his own work. However, seeking greater financial stability, he began undertaking regular gardening work, which gradually evolved into repairing garden walls across the Ouse Valley area.



It was during this time, in his late twenties and early thirties, that Simon developed a deep interest in traditional building methods. With no formal training he began to teach himself the art of traditional flint walling, dedicating evenings to researching historic techniques and the use of lime mortars. In the early years, he also spent countless hours hand-selecting and gathering flint from local fields, carefully sourcing his own materials to ensure both quality and authenticity. Through persistence, curiosity and a genuine respect for heritage materials, he honed a highly specialised skillset that is now increasingly rare.

As Simon's reputation grew locally, so too did the demand for his work. In the 1990s, his work came to the attention of the late Lord Hampden who contacted him directly and requested to view a number of his completed projects. Following this visit, and recognising the quality of Simon's workmanship, instructions were given to the Estate Manager at the time to engage Simon in the repair and restoration of flint walls across the Glynde Estate including maintenance work on Glynde Place.

Since that time, Simon has worked on the estate for the majority of his career, becoming a trusted and highly valued craftsman. His contribution has extended across numerous projects, where his knowledge of traditional materials and techniques has ensured that repairs and new work sit comfortably within their historic context. His work is not only structurally sound but visually authentic, maintaining the character and heritage of the estate for future generations.

At Comps Cottage, Simon's expertise played an important role in maintaining the integrity and appearance of the flint-faced extension, ensuring that the refurbishment respected the building's original character while meeting modern standards. His approach is defined by patience, attention to detail and an unwavering commitment to doing things properly, qualities that are increasingly rare in the modern construction industry.

What sets Simon apart is not just his technical ability, but the way in which he has built his career. Entirely self-taught, he has spent decades refining his craft through hands-on experience, research and a genuine passion for traditional construction. His story reflects a deep respect for heritage skills and a quiet dedication to excellence that has earned him long-standing trust and recognition.

Simon Watkin represents the very best of traditional craftsmanship: skilled, reliable and deeply knowledgeable, with a body of work that continues to enhance and protect the built heritage of the Glynde Estate and elsewhere in this area.

Simon has made an exceptional contribution to the architectural and heritage landscape of Sussex. He is a deeply deserving recipient of the 2026 Sussex Heritage Trust Person of the Year Award.





SUSSEX HERITAGE TRUST

ENTREPRENEUR OF THE YEAR 2026

SPONSORED BY THAKEHAM

ANDREW PIZZEY

Nominated by: George & James Architects Limited



© James Wills Photography

Andrew Pizzezy has been selected as the Sussex Heritage Trust Young Apprentice of the Year in recognition of his exceptional commitment to heritage and conservation, both in his academic studies and professional practice. Throughout his apprenticeship, Andrew has demonstrated a rare ability to combine rigorous historical research with thoughtful contemporary design, ensuring that new interventions respect and enhance the significance of historic places.

His passion for the built heritage environment is evident in projects ranging from his award-nominated university work on historic terraced housing to international archaeological collaboration in Sardinia and his ongoing conservation-focused work across West Sussex.



West Sussex design response



THAKEHAM

Community at the
heart of housebuilding

Creating communities fit for the future across the South East

WWW.THAKEHAM.COM